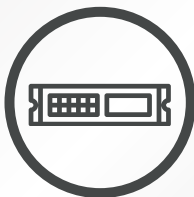




Now available
in 300 kHz version

PPS 1500U

Magnetron Power Supply



2U 19" Rack
mounting standard



Control up
to two sources



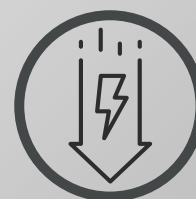
DC / Pulse DC
operation mode



Ideal for low rate
and precise coating
applications

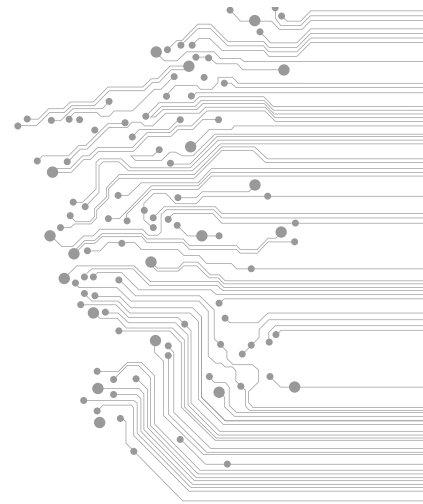
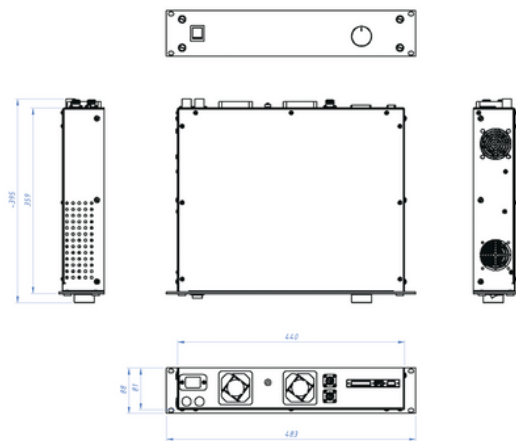


Fast response loop
in less than 95ns



Allows to operate
the sources at low
power (<2W)

PPS 1500U – Specifications



Electrical

Input voltage	195 to 250 Vac (43 63 Hz), 1 phase operation *
Input current	Max 8A; Power factor = min 0.90
Output power	1500W max in DC / PulseDC mode
Output voltage	0 – 1000 VDC negative (ignition voltage 1200V)
Output current	0 – 3000 mA (1 mA step)
Mode of operation	DC and Unipolar PulseDC
Frequency in PulseDC operation	10 kHz ... 120 kHz or 10 kHz ... 300 kHz**
Duty Cycle in PulseDC operation	2% to 99%
Regulation type	Power, Current and Voltage
Ripple noise	Switching: 2% p-p (50kHz) Line: 1% p-p (100/120 Hz)
Ramp timer	Programmable
Communication interface	RS232 / RS485**
Methods of control	Local or remote through Communication Interface
Arc menaegment	2 us Response Time
Dimensions	483W x 395D x 88H (2U 19" Rack Mounting Standard)
Weight	13,8 kg
Compliance	CE (Regulatory Compliance PPS 1500U units are CE marked and conform to Low Voltage Directive 73/23/EEC and Electromagnetic Compatibility Directive 89/366/EEC— meeting EN55011 (emissions), EN61000-6-2 (immunity), and EN50178 (safety), RoHS2

Additional options

Analog Interface	25 Dsub male connector isolated (up to 2000 V RMS, 0...5V Analogue, 0/24 VDC Digital)
Serial Communication Options	Ethernet IP with ModBUS TCP

*alternatively operation is also possible from two hot wires 3 phase systems, providing the voltage between them does not exceed more than 250 VAC

**configurable with order only